

# WholesaLED

—LED Light —

**10** years  
warranty

**180** lm/w



## Victory Series

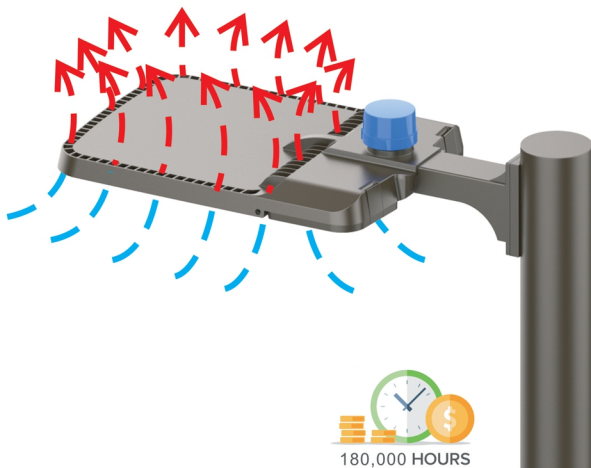
### LED Parking Lot/Area Luminaire

- **Self-Cleaning Smooth Body**
- **1 Person Easy Installation**
- **Rotatable Optics** Eases Lighting Design
- **Tool-Free Maintenance**
- **Zero Uplight** Ensures IDA Approval



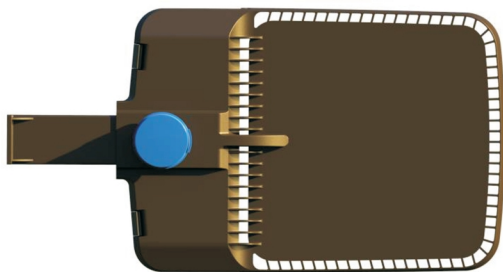
## All-around Ventilated Design with Powerful Heat Dissipation

All-around ventilated housing with Natural air convection design. Air can convect and fully pass through the gaps, thus to remove the heat rapidly, and reduce temperature by around 15 °C. make sure excellent performance and longer lifespan. LED life up to 180,000 hours.



## Patented Smooth Body with Self-Cleaning Function

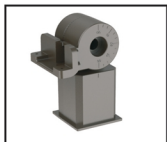
Sleek housing specially allows for washing off the dust, leaves and bird droppings, keeping perfect heat dissipation



## Single-Person Installation

This unique design features slide and lock functionality for convenient and safe installation.

Slip Fitter



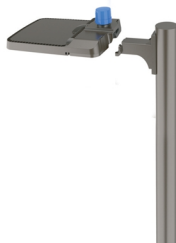
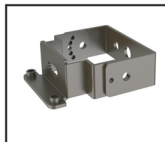
Square Pole Arm Mount



Round Pole Arm Mount



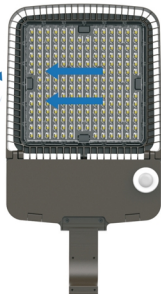
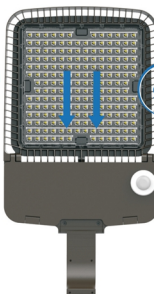
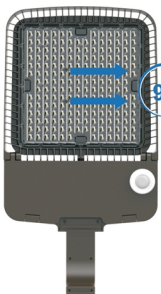
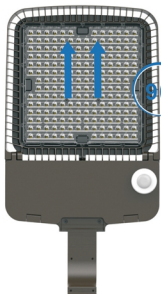
Trunnion Mount



## Rotatable Optics

Field rotation eases lighting design implementation. Simply rotate the lens and get different light distribution in different directions.

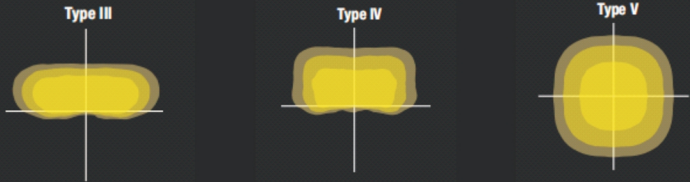
No change to fixture installation and EPA.



## Internal Reflectance optic technology

Internal Reflectance optic technology provides superior optical control to deliver exceptional light level uniformity, reduces light trespass and simplifies layouts and installations, reducing pole count, energy consumption, lowers installation costs and improves visual acuity

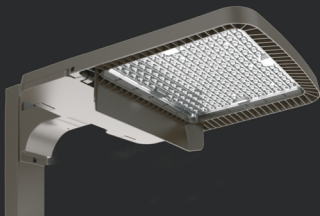
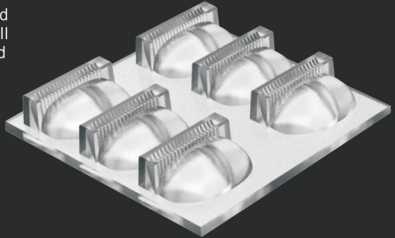
Dark sky Compliant with full cutoff and **NO up light**



## Internal Reflection Backlight Shield Design

Unique Internal reflection backlight shield design and optional house-side shield will reduce the light spill behind the pole and increase forward throw.

- 85% light reduction behind the pole
- Achieves impressive Backlight-Uplight-Glare (BUG) rating
- Neighbor-friendly lighting



House-side Shield



Few light spill behind the pole

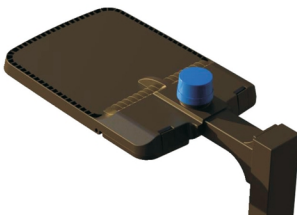
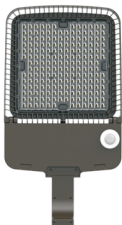
## Tool-free Maintenance

Special structural design to achieve the manual disassembly and installation of lighting components. High-power lights are generally installed in higher operating environment, the operators require as few tools as possible for their convenience and security.



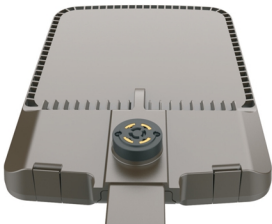
## Option of Occupancy & Photocell Sensor for maximum energy savings

Intelligent use of Pir motion Sensors meets stringent building codes such as CA Title 24 (requirements for bi-level dimming of lighting fixtures), ANSHERE, etc. Lighting energy savings of 50% or more. The sensor is capable of dimming lighting loads down to 0%\*, 10%, 25%, or 50%, allowing maximum energy savings, maximum ROI. It supports fixture and ceiling mounts up to 40ft high

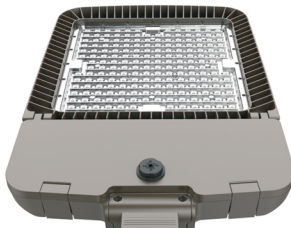


## Sensor and IOT Controller ready for Smart cities

Twist-Lock receptacle available for external controls provided by others. This optional feature means you can install your luminaires today and mount sensors at a later date - without any hassle.



**NEMA Receptacle**



**Zhaga Receptacle**

## Longer lifespan, Less labor costs, Maximum design flexibility

Unique smooth body self-cleaning function with air convection cooling channel design makes efficient heat dissipation and ensures a longer lifespan. Versatile mounting options with unique designed for 1 person installations. All distributions are field or factory aimed for maximum design flexibility.

### Benefits

- **Patented Self-Cleaning Smooth Body** with air convection cooling Function makes efficient heat dissipation and ensures a **longer lifespan**
- **Single Person Easy Installation**, Save 60% labor costs
- **Tool-free** safety switch, easy for installation and maintenance
- **Rotatable Optics**, Field aimable distributions for design flexibility
- **Back Light Control** is available for applications sensitive to light trespass, achieves impressive BUG rating.
- **Zero Uplight** ensures IDA approval
- Type III/ IV/ V lighting distributions meet various area lighting requirements
- Built-in occupancy & photocell sensor available for maximum energy savings, comply with Title 24
- Versatile Mounting Options, Suitable for any application.

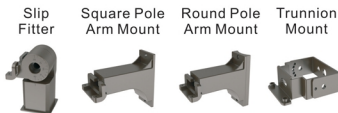
### Product Specifications

- Input Wattage: 75W, 100W, 120W, 145W, 200W, 230W, 300W
- Input Voltage Range: 100-277VAC (347-480V available)
- System Efficiency: Up to 170lm/W and 140lm/w optional
- Dimmability: 1-10V & PWM signal & Resistance
- Power Factor: 0.95+
- Distribution: Type III, Type IV, Type V
- Color Temperature (CCT): 3000K, 4000K, 5000K
- Color Rendering Index (CRI): 75+
- IP Rating: IP66 Outdoor Wet Locations
- IK Rating: IK 10
- Suitable for 3G applications prescribed by ANSI C136.31
- Operating Temperature: -40~50°C (-40~122°F)
- L70>180000 Hours
- Warranty: 5 Years, 8 Years and 10 Years optional

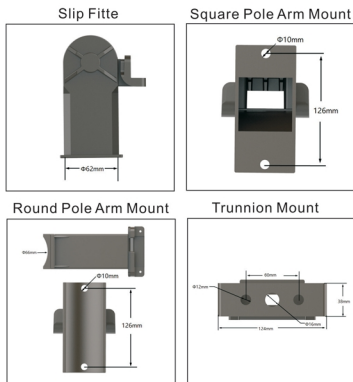
### LED Parking Lot Luminaire



### Mounting Options









### Dimensions



## Ordering Information

MODEL SELECTION		Typical order example: A-VAL200-T3AM40					
Family	Watts,Equivalency	Distribution	Mount	CCT	Finish	Voltage	Options
A-VAL							
A-VAL= Victory Series LED Area Light	75=75W 100=100W 120=120W 145=145W 200=200W 230=230W 300=300W	T3= Type III Medium T4= Type IV T5= Type V TC=Custom Optical	SAM= Square pole Arm Mount RAM= Round pole Arm Mount SF= Slip Fit Mount TM= Trunnion Mount	30=3000K 40=4000K 50=5000K	DB=Dark Bronze , std BK=Black WH=White CC=Custom Color	(OMIT)= Universal 100-277V, std 347=Universal 347V 480=Universal 480V	(OMIT)=None, std PS=Photosensor (3pin) PC5= 5 Pin Photocontrol Socket PC7= 7 Pin Photocontrol Socket MS= Motion Sensor (PIR) <40 Ft

## EPA

Config.	1	2 @ 90°	2 @ 180°	3 @ 120°	3 @ 90°	4 @ 90°
						
EPA	0.7	1.0	1.4	1.5	1.5	1.5

## Amber Light Available:

Safety, Design and Environmental Protection

Make the most of amber-colored LED light in Urban Lighting



# WholesaLED